



CODE NAME
MICROPOLIS

Enquire Asap @ +9177959 19830 | Sonia

What Does Perfect Living Look Like?



Welcome to
CODE NAME **MICROPOLIS**

The Have-it-all Habitat



CGI Artist's Impression

A Vibrant Township Nestled Between Two Lakes

Phase 1 & 2

~ **25 Acres**





Where Like Minds Live Alike

An exclusive
community of only luxury
3 & 4 BHK



Designed to make
room for social interaction
and deeper connections

~**77%**
Open Space



Dedicated Clubhouse with Each Phase



63,000+ Sq. Ft.
Clubhouse

30+ Sports &
Leisure Amenities

3 Minutes Away
from Home

Luxury Lives Here, with You



Project Entrance



Clubhouse Lobby



Tower Lobbies

All the Beauty



**Elegant and Timeless
Brick-Finish Exteriors**



Clubhouse Drop-Off

Every Movement, Planned to Perfection



Seamless Traffic Flow &
Delivery Management

Dedicated Entrances
for Residents & Visitors



Dedicated Delivery
Storage Planned in Each Lobby

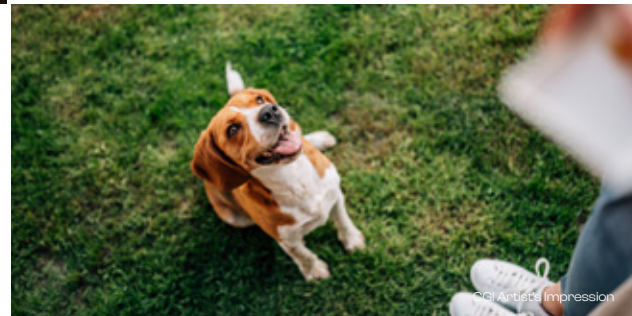


4 Lifts per Core,
Less Waiting Time

The **Have-it-all Habitat** = **An Ecosystem Designed Around a Full Life**

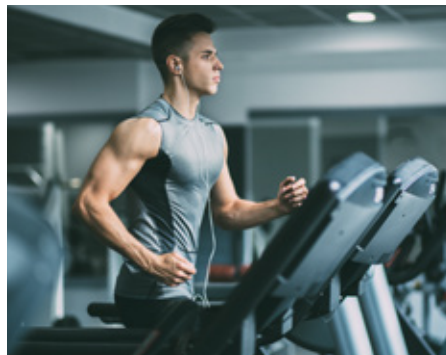


- Sports
- Workspaces
- Social Spaces
- Retail
- Crèche
- Pets' Park
- Food Truck Zone



Never Bored, Ever Again

Sports + Fitness Amenities



Stock Images

- Padel Tennis
- Pickleball
- Tennis
- Table Tennis
- Badminton Court
- Squash Court
- Billiards & Pool
- Box Cricket
- Gym
- Yoga
- Multipurpose Court
Futsal + Basketball

& More



Unexpected Luxuries in Every Corner

Temperature
Controlled Pools

Private Bowling Alley

Indoor & Outdoor
Workspaces

Kids' & Toddlers'
Play Area & Crèche



Stock Images

Space. Joy. Openness.
Beauty. Luxury.

A Home That Has it All



All the Openness

Iconic Lush Living Balconies



Up to **170** Sq. Ft.

All the Elegance

Exquisite
Material Finishes

Living and Bedroom



All the Comfort



Stock Image



Ogilvy Artist's Impression

Expansive Floor Plans

3 BHK
TYPE - 1

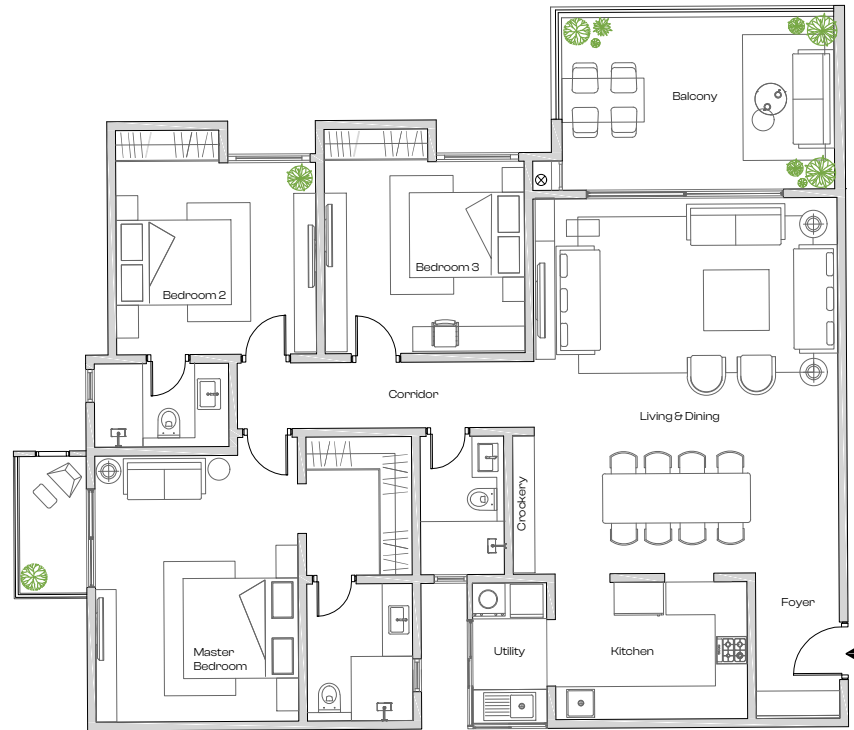
SBUA
2165 SQ. FT.

CARPET AREA*
1648 SQ. FT.

Foyer 5'X8'-9"	Living & Dining 18'-3"X22'-6"	Kitchen 11'-6"X8'-2"	Utility 4'-5"X8'-5"
-------------------	----------------------------------	-------------------------	------------------------

Balcony 16'-4"X10'-4"	Corridor 17'-9"X3'-11"	Toilet 5'X8'-3"	Crockery 8'-3"X1'-4"
--------------------------	---------------------------	--------------------	-------------------------

	Master Bedroom	Bedroom 2	Bedroom 3
Size	12'-2"X15'-11"	12'X11'-6"	12'X11'-6"
Wardrobe	6'-4"X8'-3"	6'-2"X2'	6'-2"X2'
Toilet	6'-4"X8'-2"	8'X5'	
Balcony	4'X8'-2"		



KEY HIGHLIGHTS

Seamless
Indoor-outdoor Living

Ample
Storage

Walk-in & Tucked-in
Wardrobes

A Large Master
Suite

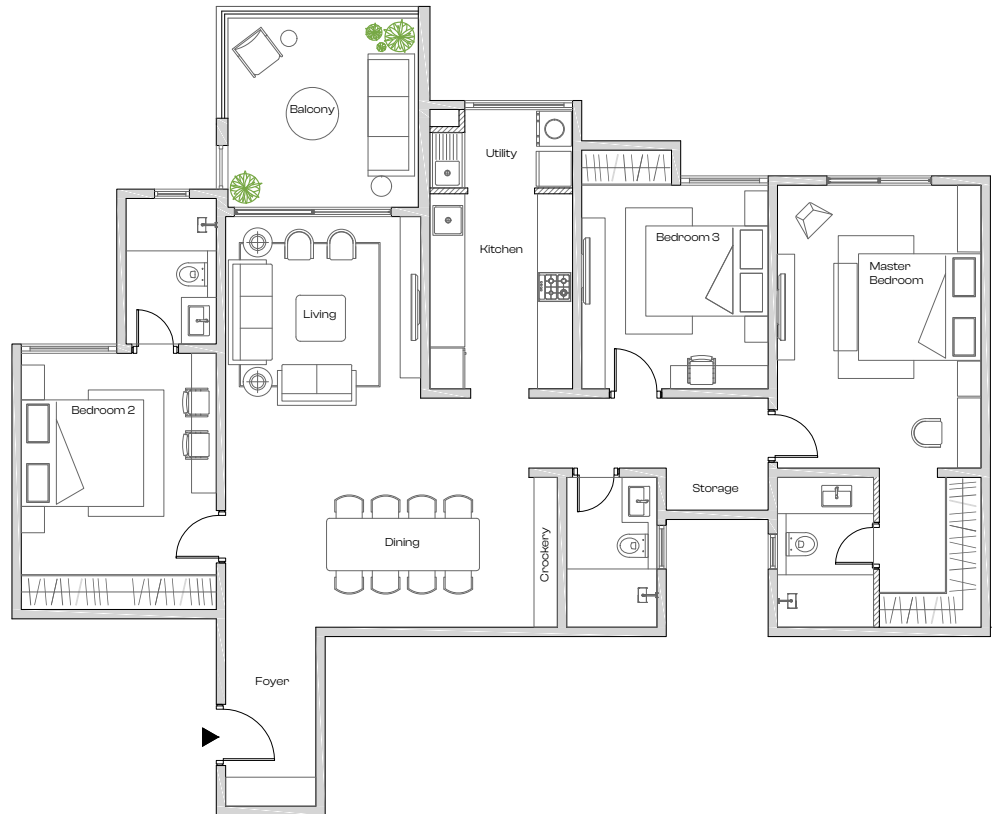


3 BHK **SBUA** **CARPET AREA***
TYPE - 2 **1900 SQ. FT.** **1431 SQ. FT.**

Foyer 5'-1" X 10'-1"	Living 11'X10'-3"	Dining 17'-1"X12'-11"	Balcony 10'-9"X10'-8"	Corridor 13'6"X3'11"
-------------------------	----------------------	--------------------------	--------------------------	-------------------------

Kitchen 8'X11"	Utility 8'X4'-5"	Toilet 5'-1"X8'-5"	Crockery 8'-5"X1'-7"	Storage 5'-9"X2'-5"
-------------------	---------------------	-----------------------	-------------------------	------------------------

	Master Bedroom	Bedroom 2	Bedroom 3
Size	11'-6"X15'-11"	10'-6"X11'-6"	11'X14'-5"
Wardrobe	5'-9"X8'-5"	5'-1"X2'	
Toilet	5'-5"X8'-5"		5'-1"X8'-2"



KEY HIGHLIGHTS

Seamless
Indoor-outdoor Living

Ample
Storage

Walk-in & Tucked-in
Wardrobes

A Large Master
Suite



4 BHK

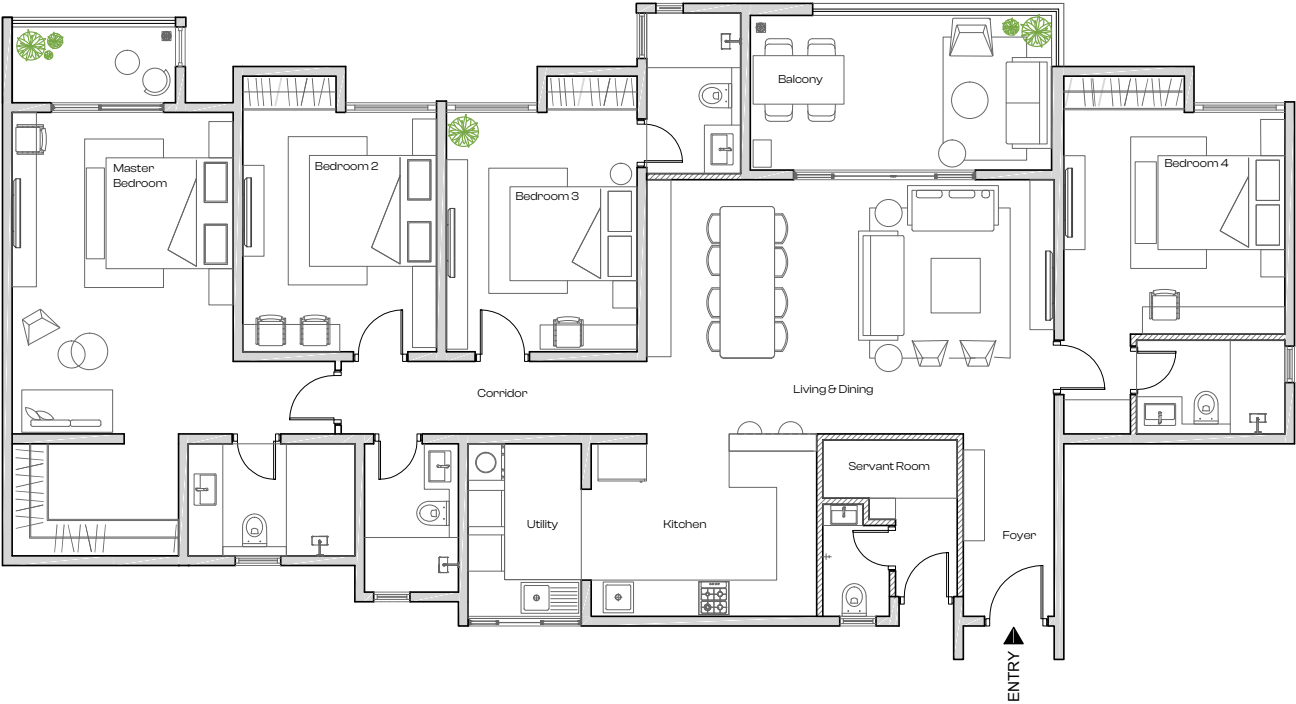
SBUA
2476 SQ. FT.

CARPET AREA*
1869 SQ. FT.

Foyer 4'-11"X9'-11"	Living & Dining 22'-1"X13'-9"	Balcony 16'-4"X8'-4"	Kitchen 12'-3"X9'-4"
------------------------	----------------------------------	-------------------------	-------------------------

Utility 6'-2"X9'-4"	Corridor 16'-7"X3'-11"	Toilet 5'-1"X8'	Servant Room 7'-3"X3'-2"
------------------------	---------------------------	--------------------	-----------------------------

	Master Bedroom	Bedroom 2	Bedroom 3	Bedroom 4
Size	12'X17'-5"	10'-6"X13'	10'-4"X13'	12'X12'
Wardrobe	9'X6'-1"	5'-1"X2'	4'-11"X2'	6'-6"X2'
Toilet	9'X6'-1"		5'-1"X8'-8"	8'X5'-1"
Balcony	8'-10"X4'-1"			



KEY HIGHLIGHTS

Seamless
Indoor-outdoor Living

Ample
Storage

Walk-in & Tucked-in
Wardrobes

A Large Master
Suite

Servant Room
with Outdoor Entry



*RERA + Balcony

For internal circulation and training purposes only.

The Masterplan for Perfect Living

Lake-side Serenity.

All Day, Every Day.



80 Acre Township*

25 Acre Phase 1 & 2*

(~77% open space)

Legend

- 1 Entry / Exit
- 2 Kids' Play Area
- 3 Farmers' Market / Food Truck Zone
- 4 Pets' Park
- 5 Box Cricket
- 6 Padel Tennis
- 7 Pickleball
- 8 Clubhouse
- 9 Multipurpose Court
- 10 Tennis Court
- 11 Amphitheatre

- Tower Lobby
- Amenities



*Disclaimer: The size of the future phase will be contingent upon receiving final approvals.

For internal circulation and training purposes only.



Stock Image

To live in a Carbon Healing Home
is to give back to the Earth that
gives so much to you



SPONGE EFFECT

Designed to utilise every
drop of rain water



SMART POWER

Efficient utilisation of
renewable sources



CLIMATE CAPSULE

Higher green cover for
lower temperature



ZERO OUT

Waste management
at source

Location Matters

HSR Extensions, Kudlu



12 Mins from
HSR Layout



14 Mins from
Electronic City

15 Mins from
Nice Ring Road

18 Mins from
Sarjapur Road

Stock Images

A Destination

That Keeps You Close to Everything
You Need and More



Map not to scale.

EDUCATION

1	Vibgyor High School	7 mins
2	National Public School	9 mins
3	Dayananda Sagar University	9 mins
4	PES University Electronic City	12 mins
5	JSS Public School	16 mins
6	Cambridge Public School	16 mins
7	Freedom International School	16 mins

HEALTHCARE

1	Manipal Hospital, Sarjapur	12 mins
2	Narayana MultiSpeciality Hospital	14 mins
3	Vasan Eye Care Hospital	14 mins
4	Nurturehood Multi-Specialty Hospital	15 mins
5	Motherhood Hospital	15 mins

LEISURE

1	PNR Felicity Mall	6 mins
2	Centro, Soul Space Spirit	18 mins
3	Nexus Mall Koramangala	20 mins
4	Brookefield Mall	26 mins
5	Royal Meenakshi Mall	24 mins

IT PARKS

1	Infosys Limited	14 mins
2	Global Tech Park Phase 3	14 mins
3	Wipro Corporate Office	18 mins
4	RGA TechPark	20 mins
5	Embassy TechVillage	20 mins

For internal circulation and training purposes only.

**Why Have
Anything Less
When You Can
Have It All?**



CGI Artist's Impression



Assetz is a human-centric company that consistently sets new benchmarks in the built environment, ensuring a better quality of life for generations to come. Our iterative design philosophy creates ecosystems that are deeply attuned to today's needs while anticipating tomorrow's possibilities. For us, sustainability isn't an afterthought—it's fundamental to our vision.

41+ Projects

Residential & Commercial

43+ Mn Sq. Ft.

Developed & Ongoing

21000+

Units Delivered & Underway

600+

Acres Acquired
and Licensed



Shot At Location

Enquire Asap

@ +9177959 19830 | Sonia